



# Meet the teacher 2024

Welcome to Y1  
Hedgehogs Class!

# This meeting:



An opportunity to:

- Meet your child's new teacher
- See their classroom
- Ask any questions about the year or Y1 generally

# The Y1 Team



Mrs Whitehead  
Y1 Hedgehogs Teacher  
Mon- Weds

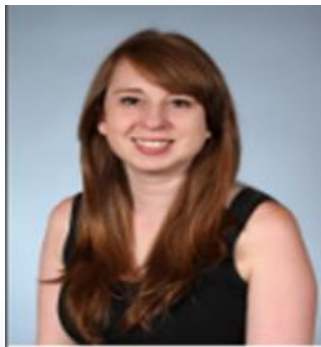
Mrs Ramery  
Hedgehogs Teacher  
Thurs- Fri



Mrs W  
Hedgehogs  
Teaching Assistant



Miss Julie  
Teaching  
Assistant



Mrs Gratrix  
Y1 Rabbits Teacher  
Tues- Fri



Mrs Doyle  
Y1 Rabbits Teacher  
Mon



Miss Hayward  
Rabbits Teaching  
Assistant

Mrs May  
Year 1-3 Lead

[year123@sandylanebracknell.com](mailto:year123@sandylanebracknell.com)

# Senior Leadership Team



Mr Strudley  
Headteacher



Miss Amor  
Deputy  
Headteacher



Mrs Waters  
Assistant  
Headteacher



Mrs Wade  
SENCO

# PPA Staff



On a Tuesday afternoon, teachers have planning time and your child will be taught by:



Mrs Doyle  
PE

Mrs Clark  
Citizenship

# An average day in Year 1



08:35	Gates open / Fine motor activities / Register
08:55	Phonics
09:30	English & COOL Time
10:40	Break
11:00	Maths & COOL Time
12:00	Lunch
12:55	Register
13:05	Foundation lessons (e.g. History, Science, Geography, Art)
14:40	Assembly (x3 a week)
15:00	Pack up and class story
15:15	Home time

# Hedgehogs Class Autumn Term Timetable



Please note that this is subject to change

	Monday	Tuesday	Wednesday	Thursday	Friday
8:35 – 8:50	Morning activities & Register				
8.50 – 9:30	Phonics				
9:30 – 10:40	English & COOL Time	English & COOL Time	English & COOL Time	English & COOL Time	English & COOL Time
10:40– 10:55	Break				
11.00 – 11:55	Maths & COOL Time	Maths & COOL Time	Maths & COOL Time	Maths & COOL Time	Maths & COOL Time
12.00 – 12:55	Lunch				
13.00 – 1:30	ICT	PPA (PE/Citizenship rota)	PE	Music/ Library	PSHE
1:30 – 2.40	Art/ DT		Science	Geography/ History	COOL Time (Group/ reading catch up)
2:40– 3:00	2.40: ASSEMBLY- Values (Guided reading)	2.45: ASSEMBLY- Phase (Guided reading)	2.45: ASSEMBLY- Singing (Guided reading)	IN CLASS ASSEMBLY (TAs Guided Reading)	2.30: ASSEMBLY- Pride
3.00– 3:10	Class Story				
3:15	Home Time				

Not yet!

# Curriculum overview for this half term



As mathematicians we will be....

- Sorting, counting and representing numbers to 10
- Recognise numbers from words
- Counting 1 more and 1 less
- Compare numbers
- Ordering numbers and using number lines
- Learning number bonds to 10

As writers we will be.....

- Constructing and writing simple sentences
- Using capital letters, full stops and finger spaces
- Using bossy verbs to write instructions.
- Being introduced to poetry.

As scientists we will be...

- Learning about the parts of the body
- Learning about our 5 senses.
- Thinking about seasonal change.

As readers we will be...

- Reading 'You Choose'.
- Reading 'The colour monster'.



## Year 1 Marvellous me!

In PSHE we will be....

- Being me in my world
- Feeling safe and special
- Class charters
- Rights and responsibilities
- Rewards and feeling proud
- Consequences

In RE we will be....

- Is everyone special?
- What makes us special?
- Thinking about different groups we are part

In PE we will be.....

- Exploring different movements in space and on equipment
- Following instructions

In computing we will be...

- Looking at position and direction by using Beebots
- Debugging programmes and fixing problems.

As historians/geographers we will be...

- Why does the weather change?
- Exploring different types of weather.
- Thinking about weather in our country and around the world.
- Recording weather changes.



# English



## Three strands within English:

- Reading
- Writing
- SPaG (Spelling, Punctuation and Grammar)

# Reading in Y1



- Children read regularly as part of phonics lessons.
- Children will read independently with an adult in school at least once a week.
- They will also take part in one small group guided reading lesson a week.
- Reading for pleasure - class stories & library sessions.

**It is of vital importance that your child reads at home regularly. This should be logged on Learning with Parents.**

# Writing



- Teacher assessed over the course of the year
- Over the course of the year, the children will have exciting, engaging opportunities for writing linked to a range of topics, themes and novels.
- Spelling, Punctuation and Grammar are taught as part of our writing lessons, not as a separate session.

This term we are continuing to work in small adult guided groups as children are used to from reception. They are however having an extra whole class input first which is new to them in this subject.

# SPaG

## Spelling, Punctuation and Grammar



- Our SPaG teaching is integrated into our Writing and Phonic sessions.
- Our main focuses this term are basic sentence punctuation (capital letters, finger spaces and full stops).

# Maths



- We teach maths at Sandy Lane using mastery format – high expectations with support where needed. Every child is sufficiently challenged.
- Later in the year we will introduce additional fluency sessions in the afternoons – these will be to support fluency in number bonds and times tables.

# Foundation Subjects



Throughout the week we also teach:

Science

Music

Citizenship

Geography

History

PSHE

Art

DT

Computing

# Equipment



The children have everything they need in the classroom for curriculum subjects.

Children **do not** need to bring in their own pencil cases.

Please do make sure that your child comes to school with a named water bottle and a coat everyday.

Y1 children must still come to school dressed in their PE kit on PE days until later in the year. Please ensure this PE kit is in line with Sandy Lane uniform policy.

Our PE days are **Tuesday & Wednesdays**.

# PSHE



- Jigsaw PSHE scheme
- Embodies all areas of Physical, Social and Health Education as set out in Government Guidance.
- Includes many areas of self-care and mindfulness.





# Values and Rules



Our behaviour at Sandy Lane is guided by our **PRIDE** values.



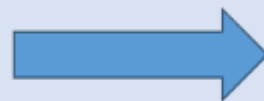
**P**ositive



**R**esponsible



**I**nclusive



**D**etermined



**E**nquiring



**R**eady



**R**espectful



**S**afe

# Assessments



- In June the children will take part in the statutory phonics check assessment.
- You will receive more information on this nearer the time.
- Reading, writing and maths assessments are all teacher assessments in Y1.

# Home Learning



- Daily reading is encouraged – recorded on the platform - Learning with Parents.
- Book changing days are a Monday and Thursday.
- Spellings



# Trips and Volunteers



- We will be planning trips and activities throughout the year. If you are able to volunteer to support any of these, please let us know when the time comes.
- Cinema trip – 14<sup>th</sup> November to see Trolls 😊

# What to do if you need help



1. Speak to the class teacher.
2. Email [Year123@SandyLaneBracknell.com](mailto:Year123@SandyLaneBracknell.com) (Mrs May is Phase Lead) or [Secretary@SandyLaneBracknell.com](mailto:Secretary@SandyLaneBracknell.com)
3. A member of SLT is available on the gate/lane at start or end of day. Also contactable by email.



**Questions?**