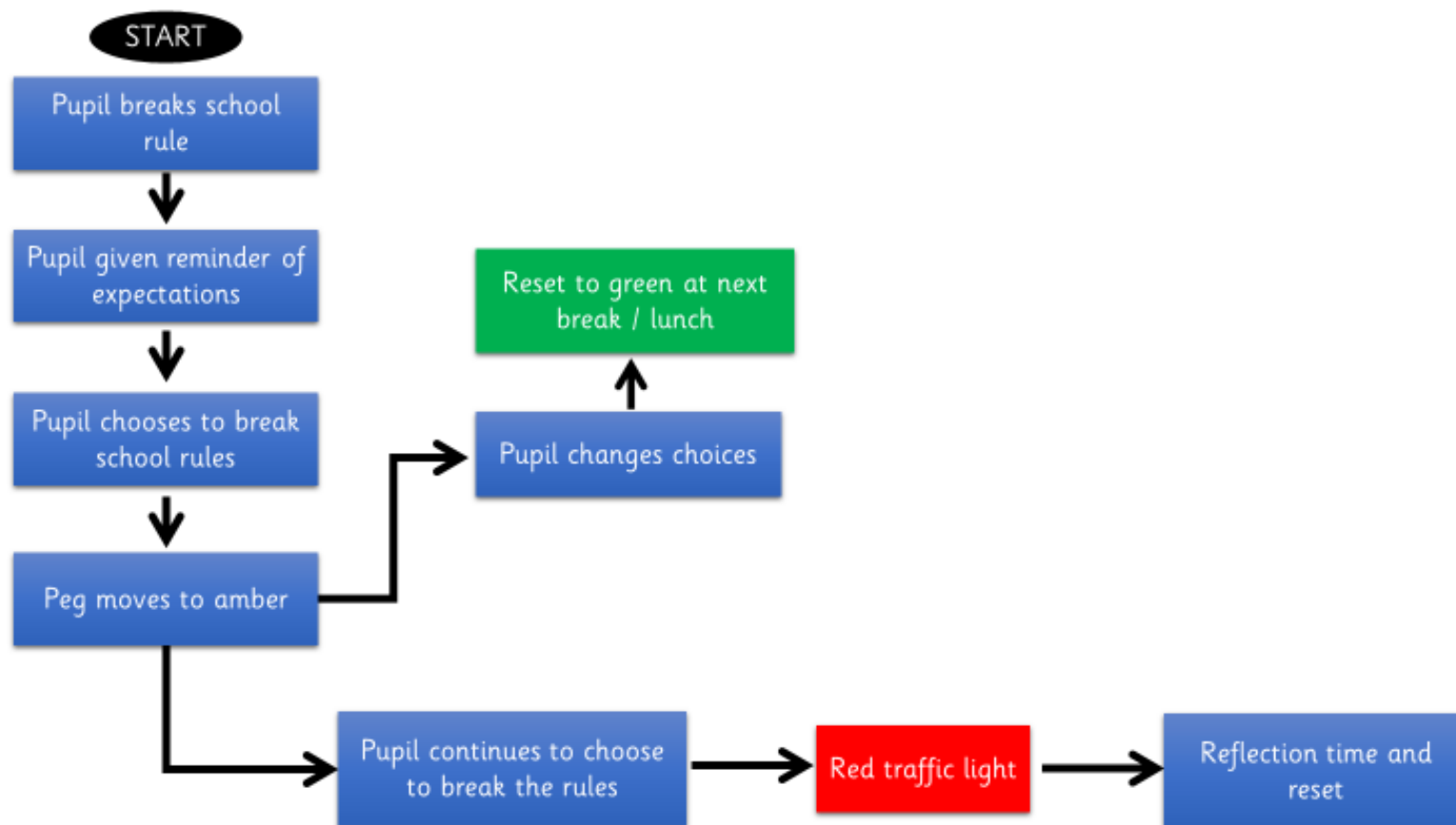


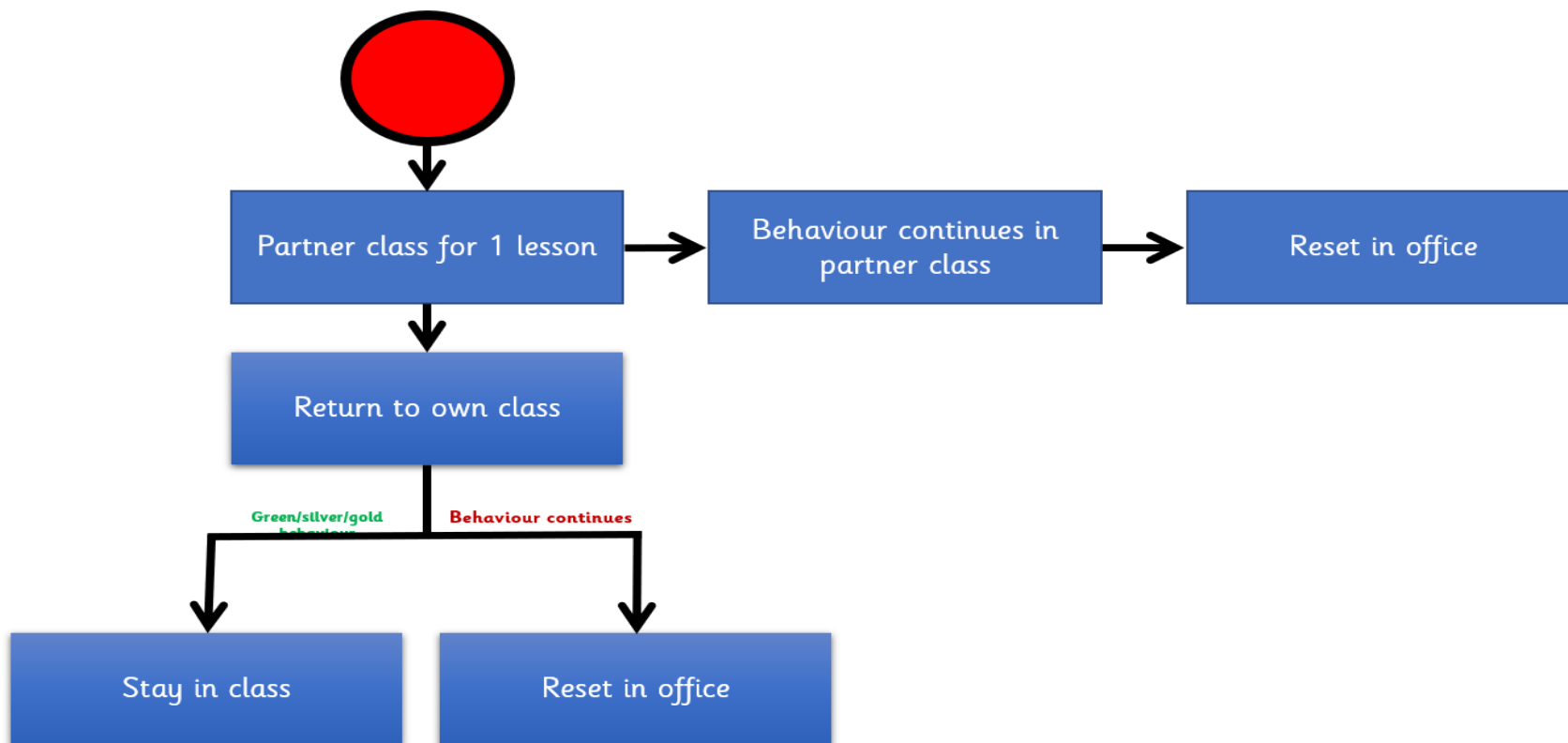


**Behaviour process**





What happens if a pupil is already on the red traffic light and negative behaviours and choices are continuing



At each of these steps, the Phase Leader must be informed. Phase Leader will inform SLT and keep log of partner class sessions.

RESETS to be monitored and recorded by SLT and FSA.

Should behaviour continue after removal then pupil may be receive a fixed term suspension or permanent exclusion.



**In addition to the Traffic Light Behaviour System, and the flow charts above, Fixed Term Suspension** *will be applied, at the discretion of HT, after:*

- Further refusals once a RESET applied
- Swearing at an adult (this includes finger gestures; swear words or implied swear words)
- Spitting at an adult
- Aggression towards an adult (or real threat with intent to scare /intent to harm)
- Fighting with serious intent to cause injury or seeking out a child to harm them
- Throwing furniture or equipment with intent, or recklessness as to harm
- Leaving the school grounds without permission

(Note- this list is not exhaustive)

The school reserves the right to apply any stage of this behaviour policy for serious misdemeanours which could lead to more immediate resets (previously internal exclusions, suspensions (previously external exclusions) and permanent exclusion