

Town & Country

Brought to you by Bracknell Forest Council

www.bracknell-forest.gov.uk

Council's budget set for year

See page 4



Time for year of self-care

See page 9



Busting recycling myths

See page 10



Topped out with plenty more to come

The regeneration of Bracknell town centre has scaled new heights with the tallest point on The Lexicon Bracknell site being topped out.

The topping out of the Marks & Spencer store has marked a key milestone in the £240m regeneration project and highlighted the progress already made on site, ahead of the planned completion in spring 2017.

The Marks & Spencer store features the tallest point on the entire site and the topping out ceremony was attended by representatives of Bracknell Regeneration Partnership (BRP), Bracknell Forest Council and Marks and Spencer executives.

Topping out is a traditional building celebration which marks the last piece of material being put in place at the top of a structure.

Councillor Marc Brunel-Walker, executive member for economic development and regeneration, said: "I'm delighted to see The Lexicon reach this important milestone.

"Marks & Spencer forms an integral part of our town centre's transformation, becoming a destination of choice when it opens next year. We are celebrating this construction milestone which brings the project one step closer to making Bracknell one of the best places to live and work in the Thames Valley."



Simon Russian, development manager for Legal & General on behalf of the Bracknell Regeneration Partnership, Cllr Marc Brunel-Walker, executive member for Economic Development and Regeneration, Gordon Scott, head of region, M&S, Andrew James, Project Director, Mace.

As well as Marks & Spencer, a host of high profile and well-known retailers are coming to The Lexicon including Fenwick, H&M and Primark alongside 10 restaurants such as Carluccio's, Wagamama and Gourmet Burger Kitchen. A 12 screen Cineworld cinema, 1,300 car parking spaces and public art installations will also be part of the new town centre.

Simon Russian, development manager for Legal & General on behalf of BRP, said: "It is very encouraging to see the rapid progress on site and reaching another construction milestone.

"The Lexicon's M&S store is a clear

testament to the strength and quality of the retail offer we are creating in Bracknell".

Beyond the the building work, construction firm Mace and BRP have been inspiring the next generation by organising tours of the construction site. School children and university students will be given an insight into the rapid progress of building works and the transformation of the town centre.

Among the first youngsters to go on a tour were 80 Year 5 pupils from Sandy Lane Primary School (pictured). They were able to view the site from the 13th floor of Ocean House and learnt more about the development and how it is being built.



You can keep up to date with The Lexicon Bracknell's progress at www.thelexiconbracknell.com

For your guide to what's on in Bracknell Forest this spring

See page 13



News

- New home for Elevate team
- Roadworks enter final phase
- Librarian's Radio 2 challenge

1-12

6

8

12

What's on

13

Local clubs and organisations

14-15

Town & Country is available online
www.bracknell-forest.gov.uk/townandcountry

A summary of Town & Country can be made available in large print, in Braille or on audio cassette. Copies in other languages may also be obtained. Please contact the communications and marketing team by emailing communications.marketing@bracknell-forest.gov.uk or calling 01344 352323.

Nepali

यस प्रचारको सक्षेप वा सार निचोड चाहि दिइने छ ठूलो अक्षरमा, ब्रेल वा क्यासेट सूनको लागी । अरु भाषाको नकल पनि हासिल गर्न सकिने छ । कृपया सम्पर्क गनुहोला ०१३४४ ३५२००० ।

Tagalog

Mga buod/ mga hango ng dokumentong ito ay makukuha sa malaking letra, limbag ng mga bulag o audio kasette. Mga kopya sa ibat-ibang wika ay inyo ring makakamtan. Makipag-alam sa 01344 352000

Urdu

اس دستاویز کے خلاصے یا مختصر متن جلی حروف، بریل لکھائی یا پھر آڈیو کیسٹ پر ریکارڈ شدہ صورت میں فراہم کئے جا سکتے ہیں۔ دیگر زبانوں میں اس کی کاپی بھی حاصل کی جا سکتی ہے۔ اس کے لیے براہ مہربانی ٹیلیفون نمبر 01344 352000 پر رابطہ کریں۔

Polish

Streszczenia lub fragmenty tego dokumentu mogą być dostępne w wersji napisanej dużym drukiem, pismem Braille lub na kasecie audio. Można również otrzymać kopie w innych językach. Proszę skontaktować się z numerem 01344 352000.

Portuguese

Podemos disponibilizar resumos ou extractos deste documento em impressão grande, em Braille ou em audiocassete. Podem também ser obtidas cópias em outros idiomas. Por favor ligue para o 01344 352000.

About Town & Country

Contact the council: 01344 352000
customer.services@bracknell-forest.gov.uk
www.bracknell-forest.gov.uk

About Town & Country: *Town & Country* is published by Bracknell Forest Council. It is printed on environmentally friendly paper. *Town & Country* is delivered to 48,000 households in the borough.

Editorial: 01344 352323
communications.marketing@bracknell-forest.gov.uk

What's On (available to not-for-profit groups):
Michelle Harries
michelle.harries@bracknell-forest.gov.uk



The Look Out word search competition

With the longer days on their way, The Look Out is celebrating by giving away three saver entrance tickets to the attraction. The saver tickets are for two adults and two children or one adult and three children (under fours go free).

M	B	P	O	R	S	L	B	W	Y	B	V	K	H	H	J	A	B	R	I
W	J	K	N	S	C	W	V	F	T	E	L	Q	Z	G	Z	W	W	F	N
J	G	P	B	R	I	O	Z	S	N	U	B	S	S	O	R	C	T	O	H
T	C	Q	C	I	E	E	C	R	D	D	E	H	W	M	S	F	Q	R	W
T	V	H	Z	I	N	H	V	H	Y	V	R	D	J	U	L	D	S	D	M
B	U	A	I	D	C	T	P	L	A	Y	A	R	E	A	Y	G	Z	Y	S
W	P	O	Y	L	E	C	L	V	R	Y	V	T	Y	E	E	G	G	E	R
R	L	O	K	Z	D	I	O	Q	P	Z	H	N	A	Z	B	T	H	Q	N
C	D	M	F	O	Z	R	E	U	I	Q	T	S	H	K	T	R	M	W	F
W	L	V	D	B	O	E	E	E	E	H	T	T	J	U	S	C	X	J	P
I	O	S	A	D	K	L	T	N	E	E	O	N	T	I	Q	G	A	K	H
J	H	M	N	G	W	A	E	S	R	S	E	N	O	Z	F	D	G	N	E
G	O	A	R	V	L	R	L	H	J	S	Y	B	G	B	X	H	H	E	F
E	S	P	O	O	E	I	L	H	T	E	V	N	N	J	T	I	K	Z	J
K	T	P	C	R	M	F	H	F	P	P	Y	Y	M	A	Q	E	X	J	B
A	Q	O	W	E	U	O	Y	G	V	A	C	J	B	R	C	S	I	F	T
L	H	L	S	N	G	W	P	O	H	W	O	Y	Q	N	S	T	Y	V	J
C	E	H	O	U	M	D	Y	M	H	D	U	L	Y	X	O	E	A	G	D
Z	O	G	L	F	W	T	D	U	L	S	M	C	L	B	S	X	S	I	X
W	O	Q	K	J	N	X	J	L	J	F	C	O	N	P	P	I	O	R	A

THE SLIME SHOW

SCIENCE

CHOCOLATE

THE LOOK OUT

PLAY AREA

ERIC THE OWL

EASTER

CHILDREN

ZONES

FUN

EGGS

HOT CROSS BUNS

To be in with a chance of winning one of these fantastic prizes all you have to do is complete the word search and send it to:

Town & Country competition

The Look Out Discovery Centre,

Nine Mile Ride, Bracknell

Berkshire RG12 7QW

By Friday, April 8, 2015.

Winning tickets need to be used by Monday, May 31.

Good luck!

Name: _____

Address: _____

Email: _____

Tick here if you would like to receive latest news, promotions and offers

Tel. no. _____

For more information about The Look Out, go to
www.bracknell-forest.gov.uk/thelookoutdiscoverycentre

Help for families in dire situations

Like many other areas across the UK, the borough faces growing demand from homeless households, Bracknell Forest Council has opened Tenterden Lodge, a new form of emergency accommodation to help those in need.

Providing a cost-effective alternative to bed and breakfast accommodation, Tenterden Lodge offers temporary housing for homeless families in the borough and features 11 bedrooms, a communal kitchen, dining room and laundry facilities; designed to ensure better living conditions for people during their time of need.

The council has a duty to provide accommodation for homeless people in the borough and the previous lack of temporary housing meant more families were spending longer periods of time in bed and breakfasts.

Tenterden Lodge was purchased after the council calculated the new temporary measure for providing shelter for homeless families would save more than £180,000 a year.

The savings will be generated as Tenterden Lodge replaces the bed and breakfast accommodation which was previously located in surrounding areas such as Slough and Aldershot, as well as savings in school transport costs for

homeless families outside the borough.

Cllr Dale Birch, executive member for adult services, health and housing, said: "By investing in Tenterden Lodge and keeping people within the borough, we will save the council a significant amount of money long term, while allowing for those in need to access a better temporary alternative."

Simon Hendey, chief officer for housing, said: "Not only are there substantial savings for the council in this new measure, it is also a much better option for homeless families as it allows for them to remain within the borough so they have the support of friends and families close by at a point of crisis in their lives. Furthermore, people can more easily maintain employment and avoid high transport costs back into the borough if they do not drive."

The law states that the council must provide emergency accommodation for you if you meet the following conditions:

- you are homeless
- you are in priority need, which includes having dependent children or fleeing domestic abuse.

The council will also assess if you have made yourself intentionally homeless, if you were evicted from your home because of a breach of tenancy (deliberately not paying the rent, causing a nuisance or damaging your property) or you left home voluntarily. In these circumstances, it is unlikely the council will be able to help you.

You must also have a connection with Bracknell Forest or need to be in the area for special reasons.

We are only able to help homeless households who meet these legal criteria. If you are not a UK citizen or you have lived abroad, you may not qualify for accommodation.

If we cannot provide accommodation we will offer you advice and assistance on other housing options.

To find out more about the emergency accommodation available in the borough, visit www.bracknell-forest.gov.uk/homelessnessprevention

Lily Hill Park blossoms

A new green-fingered group of volunteers will help ensure one of Bracknell's beauty spots is kept looking its best all year round.

Cultivating Friends at Lily Hill Park has been launched to look after the Bracknell Forest Council-operated park and bring together volunteers from all sections of the community.

To help its work, the group has been given a £250 boost from the Friends of Lily Hill Park group which has wound down its operations after 18 years.

The donation, which comes from the balance of funds from the Friends group, has been used to ensure volunteers have access to the right tools and protective equipment.

The new group has emerged to continue the work of the Friends of Lily Hill Park which came together in 1997 as a group of residents which campaigned for the conservation and retention of the park from any development.

It blossomed and went on to play a key role in securing funding to restore the park's appearance.

Cllr Iain McCracken, executive member for culture, corporate services and public protection, said: "I would like to thank the Friends of Lily Hill Park for their dedication to the park and its restoration. It's been 10 years since the Earl of Wessex opened the restored park and it has, and continues to be, regularly enjoyed by visitors to



Bracknell and residents alike.

"The new group is asking for help to keep it looking good for everyone so if you can spare a couple of hours on a Thursday morning, come and join the gardening team from 10am to 12 noon and help them with a variety of practical tasks."

Regular volunteers with the new group include Joe Graham and Clive Halliwell who are residents at nearby Ravenswood-Norwood.

Mark Sklar, acting home manager, said: "Clive and Joe, who are supported by Norwood, have worked with Bracknell Forest rangers for many years, and are an example of the positive contribution people with a learning disability can make in the wider community."

Pupils benefit as six schools improve their Ofsted ratings

Six of the borough's schools have been celebrating improved Ofsted ratings with an additional school on track for a 'good' rating at its next inspection.

Since summer 2015 six of the borough's schools have leapt to an official Ofsted 'good' rating after impressing inspectors.

The schools with improved gradings are:

- The Pines School in Hanworth - which went from 'requires improvement' to 'good'.
- St Michael's Sandhurst - which went from 'requires improvement' to 'good' with an 'outstanding' early years section.
- Wildmoor Heath Primary School in Crowthorne - which went from 'requires improvement' to 'good'.
- Kennel Lane School - which received a 'good' with 'outstanding' features.
- College Town Junior School - which went from 'requires improvement' to 'good'.
- Wooden Hill Primary School - which went from 'requires improvement' to 'good'.

Additionally, Sandy Lane Primary School was praised by inspectors last term for the rapid progress it has made towards becoming a 'good' school since September. The school has already moved from 'serious weakness' to 'requires improvement' and is on track to being officially rated 'good'.

Cllr Gareth Barnard, executive member for children, young people and learning, said: "It's great news that six of our schools have seen their inspection ratings rise since the summer. Our aim has always been to provide all the borough's children with the best possible start in life, including their education, and I am pleased Ofsted agrees our schools are doing just that."

"Sandy Lane Primary School is working extremely hard with the local authority and newly reconstituted governing body to raise standards, which Ofsted has acknowledged and praised during its recent inspection letter. I have every confidence the school will achieve a 'good' rating at its next full inspection - joining the growing list of Bracknell Forest schools to have their rating elevated."

Budgeting for 2016/17 and beyond

The council has set a new budget for 2016-17 to keep the borough a place where all residents can benefit from effective services while starting to address a funding gap of £24.5m over the next four years.

Over the last four years we have achieved savings of over £18 million whilst continuing to provide effective services for residents, business and communities. However, with a government mandate to reduce public spending, all councils have no choice but to make significant changes to the way some services are delivered and how we raise income.

In Bracknell Forest this will include the first increase in council tax for five years - by 3.99 per cent - along with a programme of savings, changes introduced via our transformation programme, and the use of balances to support spending in the short term. Against a backdrop of council tax freezes for the past five years, we recognise this is a different proposition for our residents. However put into context, the true cost to residents, of the increase will be less than £1 per week (based on a typical band D property).

By doing this we are delivering on our commitment to prioritise people and areas with the greatest need and to safeguard core services. We believe this is the fairest way to manage a deep cut in our spending power.

In December 2015 we told residents of the government's advice, to expect a 25-40 per cent cut to our revenue support grant settlement over four years and started to consult on how to bridge a potential budget gap of £10m for the coming year. The government has since delivered a settlement that increases our basic funding gap to £12.5m in 2016/17 which means we need to save £24.5m between now and 2019/20. Government has provided just over £0.9m in transitional grant in each of the next two years to provide some relief, but this is not enough to prevent the council from having to make more savings than we initially identified and local people will over time, inevitably notice the impact.



Targeting our services

In November 2015 we agreed a new council plan to cover the period to 2019 and this sets the framework for how we will deliver the necessary savings. A key feature is that we will prioritise people and areas with the greatest need, early help and prevention so struggling or vulnerable people can maximise their opportunities to become independent.

As well, we have already started a number of financially driven reviews and transformation projects for many of our services. These reviews recognise that we have less money to spend and so will enable us to deliver services in different ways.

Cllr Paul Bettison, leader of Bracknell Forest Council said: "The implications of the reduction in funding, as well as the difficulty of imposing such a short timeframe to deliver savings, were made clear to the government minister in January. Whilst the government's direct response in the shape of new transitional funding for the next two years is welcomed, we must still accept that our services will change markedly over the next four years."

Cllr Peter Heydon, executive member for transformation and finance said: "Our new council plan was written to deliver our manifesto which we were re-elected on last year. A significant component of this was understanding the need to reduce the national deficit - so we will maintain our commitment to prioritise and target our services to live within our means. However the speed at which we must deliver savings has changed markedly so we are working to identify and deliver significant savings as quickly as possible which is why the transformation programme is vital to our future operations."

The budget at a glance

In common with most local authorities we are proposing that residents pay a small amount extra to fund the essential services we deliver this year.

We will do this by increasing council tax by 3.99 per cent - less than an extra £1 a week to a Band D council tax payer. Of this, two per cent will specifically help pay for the ever growing demand for adult care for borough residents. As well as increasing council tax, we have reduced spending, notably by:

- Reviewing adult social care packages, saving £1.34m
- Reducing highways maintenance and integrated transport measures, saving over £0.7m
- Increasing the number of children looked after by in house foster carers and other measures, saving nearly £0.3m
- Reducing building maintenance and information technology projects, saving £1.1m
- Reducing staffing costs by over £1m, which will mean 22 job losses
- Short term use of £5.1m of balances to set a balanced budget

Next steps

We already have a programme for reviewing all our services and the way we deliver them to ensure they support our priorities and deliver the best value for money for residents.

Some of our services will change from 1 April 2016 to ensure the budget for the new financial year is in place. Other possible changes to services and funding arrangements which include highways, children and youth services, library book fund spending, voluntary sector grants and community safety, as well as financially driven reviews of library and arts provision, require longer and wider consultation with partners and residents. Changes to these may be made later in the year, depending on the outcome of the consultations, allowing us to reduce the use of balances to a more sustainable level.

We are already, and will continue to consult with, residents and partner organisations on the savings we need to make. We ask residents to carefully consider the enormity of the financial challenge government has set us and to consider how we can deliver changes in the fairest way possible; enabling us to target those with the greatest need and to prioritise services to live within our means.



Brighter town centre ahead

A major project to overhaul town centre roads, car parks and gateways has got underway, signalling another step forward in the extensive £240m regeneration programme to form The Lexicon Bracknell.

Once complete, the work will see improvements to town centre roads and footpaths to create a more pedestrian friendly experience. In addition, pedestrian bridges will be refurbished for the first time in more than 25 years – creating a more user-friendly and attractive gateway to Bracknell's modern, fresh and exciting town centre.

The work to buildings is being carried out by contractor Knight Harwood on behalf of Bracknell Forest Council and Bracknell Regeneration Partnership. Highway works will be undertaken by Ringway.

It will include major improvements to the frontage of Princess Square and the High Street car parks, as seen from The Ring, as well as the roadway between these two key buildings.

The changes will result in larger-scale improvements made to:

- The Ring, between Princess Square and High Street car park, to transform this road into an enhanced and attractive pedestrian and cycle thoroughfare
- the façades of both Princess Square and High Street car parks
- the two footbridges over The Ring, which connect Princess Square to High Street car park, which will be refurbished
- the area around Charles Square car park with enhanced landscaping and the removal of cluttered street signs.

The work will complement the £240m regeneration work being carried out to create The Lexicon Bracknell. Works to improve the inside of High Street car park have also started which will complement the improvements that have already been completed at Charles Square car park.

Cllr Marc Brunel-Walker, executive member for economic development and regeneration, said: "We've always said that the regeneration is about providing a destination of choice for our residents and visitors, which is more than just a shopping centre.



"This £6.25m plan is part of the work to create a much more impressive and enjoyable overall town centre with improved gateways for customers and a continuation of the softening of the town centre, which is already underway through the regeneration project.

"The council set aside funding for this project last year as our residents continually tell us that a thriving and modern town centre is one of their top priorities. In addition, this work will help to create a new social and cultural heart and will encourage greater economic prosperity within the borough."

Simon Russian, development manager, Legal & General on behalf of Bracknell Regeneration Partnership, said: "These works will have a great impact on the look and feel of the new town centre. The aim of the regeneration is to improve existing parts of the town centre, as well as the new development and these important works will be a major part of that."

Grahame Roberts, director of special works at Knight Harwood says: "Knight Harwood are very proud to be involved in the Bracknell 'greening works', which will complement the regeneration of Bracknell town centre."

The work is due to be completed by autumn 2016.

The Look Out cleans up at awards

The Look Out Discovery Centre has scooped four top awards, with three earned for its spotless loos.

The centre's toilets won the National Award (England) for Visitor Attractions, plus Attendant of the Year and retained a platinum rating overall in the 2015 Loo of the Year Awards.

The Look Out also gained an impressive score of 98% for staff efficiency, knowledge and customer care and 91% for the overall look, appearance and information provided by the centre in an assessment by the Visit England Visitor Attraction Quality (VAQUA) Scheme.

The assessor took a comprehensive look at how the facility works including observing customer care standards, the quality of the shows and exhibits, the car park, toilets and the centre's gift shop.

Cllr Iain McCracken, executive member for culture, corporate services and public protection, said: "It's great news and huge congratulations to our hardworking team, led by Jacky Henderson.

"I was particularly delighted to hear the Loo of the Year assessor describe the toilets as very attractive facilities with children in mind and the VAQUA assessor describe



the shows as extremely enjoyable and educational for children aged three and older and adults as well."

The Look Out, which is open seven days a week, has more than 90 hands-on science and discovery activities inside the centre, making it a great place to visit with all the family.

For more information, go to www.bracknell-forest.gov.uk/thelookoutdiscoverycentre

News in brief

Empty properties

Landlords and other property owners are being advised to expect a change to council tax charges on empty and unfurnished properties.

Currently, if a property becomes empty and unfurnished, no council tax is charged for the first month the property is vacant.

However, this is a discretionary policy and the council will no longer be able to fund this approach.

Therefore, full council tax will be payable on all properties – except with some special conditions – as soon as they become empty, including in the interim period between tenancies.

The policy is due to take effect from 1 April, 2016.

For more information, go to www.bracknell-forest.gov.uk/counciltax

Top mark for car parks

Drivers using our car parks are leaving their vehicles in some of the safest places in the country, according to a respected national awards body.

High Street and Charles Square car parks have been officially accredited by the prestigious safer parking award scheme Park Mark for the seventh year running.

Park Mark uses police assessors to inspect car parks all over the country and the facilities selected must meet a host of strict police guidelines and expectations.

Simulated challenge

The council owned Downshire Golf Complex has installed an indoor golf simulator which transports players to some of the best courses that the UK and the USA have to offer.

With their own equipment, golfers can play 18 holes at courses ranging from Carnoustie, The Belfry and Celtic Manor to Oakmont, Congressional and Hazeltine using the state-of-the-art simulator.

The technology is so versatile contests such as Nearest the Pin and Longest Drive can be held. Golfers can also get personalised analysis on how far they drive with their different clubs (a gap test) and custom fitting advice for exploring any new equipment (a club fitting).

For more information, go to www.bracknell-forest.gov.uk/downshiregolfcomplex

Elevate moves base to help more young people

The council's team dedicated to helping 16-24 year olds gain education, employment and skills has moved to a new home to encourage even more young people to seek the skills and knowledge they need to thrive.

The Elevate partnership, which helps young people to get help, advice and support on employment, work experience, volunteering and mentoring, is now based at the Breakthrough offices in Rectory Lane, Easthampstead.

Its new home is in a more public location so will help encourage more young people to drop in. It also has extra space so an Elevate Hub co-ordinator can work with partners such as Adviza, National Careers Service, Job Centre Plus and other local providers so young people can get all the information and support they need under one roof.

Additionally, the team will be able to work more closely with Breakthrough, which delivers the borough's supported employment service, providing help to people with a learning disability and/or autism to prepare for, achieve and maintain meaningful employment.

One Elevate client had found himself struggling with cash flow as he ran his own music company and contacts delayed paying him. He was at the point where he could no

longer survive with how his work arrangements were operating.

He got in touch with Elevate and within three days he had secured a job as an advanced physique coach at a gym in Camberley. He had been given a

comprehensive offering of advice from David Bolam, Elevate Hub co-ordinator, Adviza and the National Careers Service who all helped him to hone his CV and job search.

The client said: "I felt a little lost before coming to Elevate and a bit directionless. This service has been extremely beneficial, and without it I wouldn't have got that push to get myself a job that not only I enjoy, but also helps me to support myself!"



David Bolam, Elevate Hub co-ordinator, dishing out advice

More information about Elevate can be found at: www.bracknell-forest.gov.uk/elevatebracknellforest or bracknellforest.elevateme.org.uk

Right Royal clean up

Proud residents can get involved in cleaning their communities for Queen and Country to celebrate Her Majesty's 90th birthday.

The Clean for the Queen campaign was set up by Tidy Britain as an incentive for community clean-up projects in the run-up to the Queen's historic birthday celebrations.

Bracknell Town Council and Warfield Parish Council have already signed up to take part with Bracknell Forest Council, and more organisations are welcome to get involved as well.

While the main clean up days for the national campaign were run from Friday, 4 March, to Sunday, 6 March, Bracknell Forest Council will be co-ordinating events throughout March to keep the spirit of the scheme alive.

Cllr Mrs Dorothy Hayes, executive member for the environment, said: "We want to keep the ideas and passion behind this wonderful scheme going to keep our borough looking fantastic right up until Her Majesty's big day.

"We already run our Take Pride scheme and have dedicated groups and individuals who take it upon themselves to keep their communities looking at their best, but this is another chance to show your pride and celebrate this historic occasion at the same time.

"I would urge businesses, schools, community groups and any other organisations to sign up and take part."

Register your interest to take part by going to www.cleanforthequeen.co.uk and completing a short form.

For more information about Take Pride, go to www.bracknell-forest.gov.uk/takepridevolunteering

Get Active! Easter crash courses



Sports Sessions

- Go karts
- Gym & Trampolining
- Tweeny Tumblers
- Trampolining for families
- Badminton
- Fun Sessions
- Ballet Taster Sessions
- Team Gym fun Sessions



Swimming Courses

- Beginners
- Improvers
- Pool Lifeguard Qualification (16yrs+)



29 March – 9 April 2016

Collect a brochure for all times, dates and details or download from www.bracknell-forest.gov.uk/blc

Bracknell Leisure Centre Bagshot Road, Bracknell, Berkshire, RG12 9SE
Tel: 01344 454203 www.bracknell-forest.gov.uk/be



Pocket Pal pendant is a lifeline

The council's tele-care service is introducing a new product to help people maintain their independence.

Over the next few weeks Forestcare will be rolling out a GPS mobile lifeline, the Pocket Pal, to increase confidence and independence for vulnerable people.

The Forestcare lifeline is a personal alarm system that provides a link through to our dedicated control centre, 24 hours a day, 7 days a week, 365 days a year.

At the touch of a button you will be connected to a person at Forestcare who will offer help and make sure

you get the right assistance.

Up until recently, technology meant that lifeline alarms had to be installed in the home and only had a range of the property and the person's garden.

Advances now mean that a lifeline can also be used while a person is out and about. The mobile lifeline, which can fit into the palm of your hand, can be conveniently carried in your pocket.

You can even speak to the team

via the Pocket Pal pendant, no matter where you are.

Cllr Dale Birch, executive member for adult services, health and housing said: "There is an increasing demand amongst our existing and potential lifeline customers to have the safety and security that a lifeline brings at home and away.

"It can also help reduce trips to the doctor or relying on family and friends to provide help. The pendant can give the person more independence."

The GPS technology enables Forestcare to track and locate the

individual if they get lost or have an accident wherever they are.

Ashley Freeland, Forestcare manager, said: "We can be alerted if you go outside of your comfort zone. This new product will give people peace of mind, allowing those signed up to enjoy themselves while they are out without the worry of getting lost."

For more information on the Pocket Pal or other services provided please call Forestcare on 01344 786599.

Garth Hill College's £6.75m sixth form officially unveiled

The new £6.75m state-of-the-art sixth form centre at Garth Hill College has been officially unveiled by Margaret Saner CBE.

Mrs Saner, president of the United Nations Committee of Experts on Public Administration and a former Garth Hill College governor, opened the building in front of dignitaries, staff and pupils.

The post-16 education hub opened to students in 2015, complete with new seminar rooms, ICT suites, sciences labs, design technology and art rooms.

It provides places for more than 350 learners and is part of the school's overall expansion plan -

offering both academic and vocational qualifications. Many of the sixth formers were part of the first group of Year 7 pupils to start the school after its £40m rebuild in 2010.

The unveiling follows the opening of a dedicated learning centre for secondary school aged people with autistic spectrum disorder in November.

Rise@GHC, which is based in Eastern Road and is part of Garth Hill College, enables pupils to be educated as part of a mainstream school

but also allows for specialist teaching and learning support, where necessary, to help pupils achieve their full potential.

It was officially opened by Bracknell Forest mayor councillor Mrs Dee Hamilton and Asperger's champion Dean Beadle.

Bracknell Forest Council funded the new £2.5m building alongside the Department for Education. It is currently educating eight Year 7 pupils but will educate 11-19 year olds in the borough with high functioning autistic spectrum disorder - including Asperger syndrome and childhood autism.



Margaret Saner CBE with pupils, Garth Hill College staff and Bracknell Forest Council representatives.



Bracknell Forest Mayor cllr Mrs Dee Hamilton officially opened Rise@GHC alongside Asperger's champion Dean Beadle, staff, pupils and dignitaries.

Bracknell Forest in 2036

An influential planning blueprint which will shape how the borough looks over the next 20 years is being formed and residents' help will be needed.

Bracknell Forest Council is preparing a Comprehensive Local Plan which will shape the amount and location of housing, economic and retail development and new infrastructure in the borough up to 2036.

The new plan will also include policies to help decide planning applications, covering issues such as development in the Green Belt, heritage matters and flood risk.

There will be a number of opportunities to get involved, with the first major public consultations planned in June/July this year.

To register your interest in taking part in the consultations, email your contact details to development.plan@bracknell-forest.gov.uk

For updates on the new Local Plan, go to www.bracknell-forest.gov.uk/comprehensivelocalplan

Views sought on Learning Village plan

Plans for the council's proposed learning village in Binfield are open to public comment with the submission of a planning application by local developer Luff Developments Limited.

Luff, which the council is working with to take forward a masterplan for the entire former Blue Mountain site, has submitted a planning application for all aspects of the site. This includes the learning village, homes, community facilities, open space and sports provision and suitable alternative natural greenspace (SANG).

This planning application is different to most because it seeks full planning consent for the learning village and SANG with associated access routes and outline consent for the remainder of the scheme, at the same time. Securing full consent for the learning village would enable the council to start work on the new school, while more time is allowed for the detail of the new homes, community facilities and sports provision.

The application follows extensive consultation with Binfield community representatives since summer 2014 when a community reference group was established. Additionally three public exhibitions were held last year. The application

will take us another step forward in addressing the urgent need for more education places in the north of the borough.

The masterplan in full comprises:

- A new all-through 1851 place school consisting of a two-form entry primary school with nursery, a seven-form entry secondary school including post-16 with integrated SEND provision.
- On-site sports and recreation facilities
- Associated community facilities
- 400 homes
- Open space
- Suitable Alternative Natural Greenspace(SANG)

The Blue Mountain site is an agreed area in the 2013 site allocations location plan for new homes, a school, community facilities and open space.

To view and have your say on the proposed learning village visit www.bracknell.gov.uk/viewplanningapplications and search for application number 16/00020/OUT.

Bagshot Road junction work on course for early finish

The ongoing project to improve one of the busiest roads in Bracknell Forest is entering its final stages, months ahead of schedule.

The £3m scheme to replace the Coral Reef roundabout on the A322 Bagshot Road with a four-way traffic light junction is nearing completion.

The scheme has been designed to manage the expected increase in vehicle numbers as the borough grows over the next decade and beyond.

Work began in April last year and the final four-week stage of the project is due to begin in the middle of March, four months ahead of programme.

Cllr Chris Turrell, executive member for planning and transport, said: "This project will ensure the Coral Reef junction will be able to cope with increased traffic as Bracknell Forest continues to grow. Once complete, it will improve travel around the borough for years to come."

This final phase will involve temporarily closing the central part of the junction to facilitate works and so there will be temporary bans of some right-turn traffic movements to and from the Nine Mile Ride and New Forest Ride arms of the junctions. Diversion

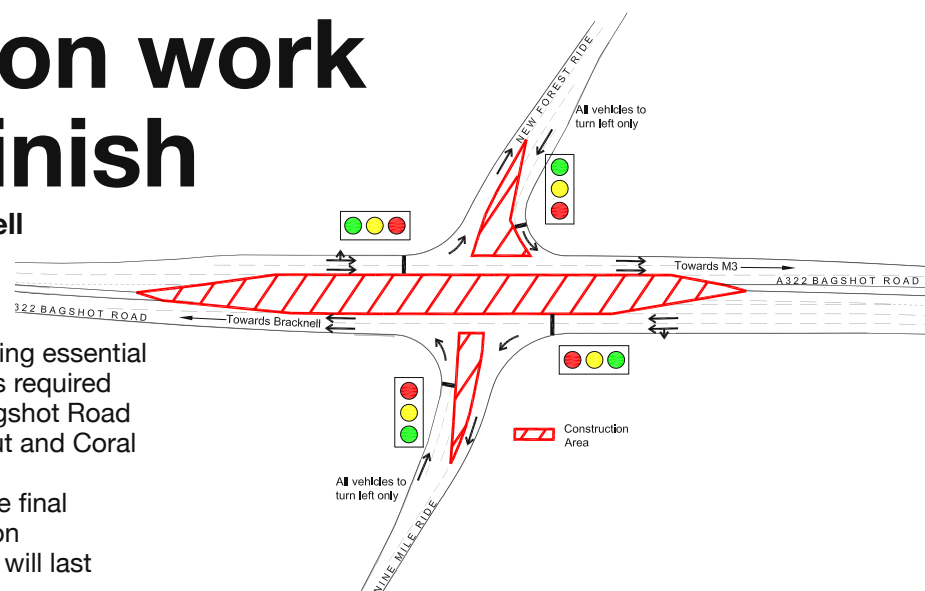
routes will be signposted (see box to the right).

The council is also undertaking essential carriageway resurfacing works required on the stretch of the A322 Bagshot Road between the Hilton roundabout and Coral Reef junction.

This work will begin once the final stage of the Coral Reef junction improvement is complete and will last around four weeks.

The resurfacing work will be carried out using overnight road closures between 8.30pm and 6.00am (Monday to Friday) to reduce disruption. The work will take two weeks in each direction and signed diversion routes will be in place.

Cllr Turrell added: "We appreciate motorists have been very patient while this work has been carried out and we thank them for that. This additional maintenance work is essential and combining the project provides significant benefits."



What to expect during the final junction work stage

Temporary traffic lights will be used to manage traffic and enable vehicles to turn left safely from the side roads onto the A322 (see diagram).

Left turn movements from the A322 will be unaffected and two traffic lanes will be maintained in each direction on the main road for the majority of the four weeks.

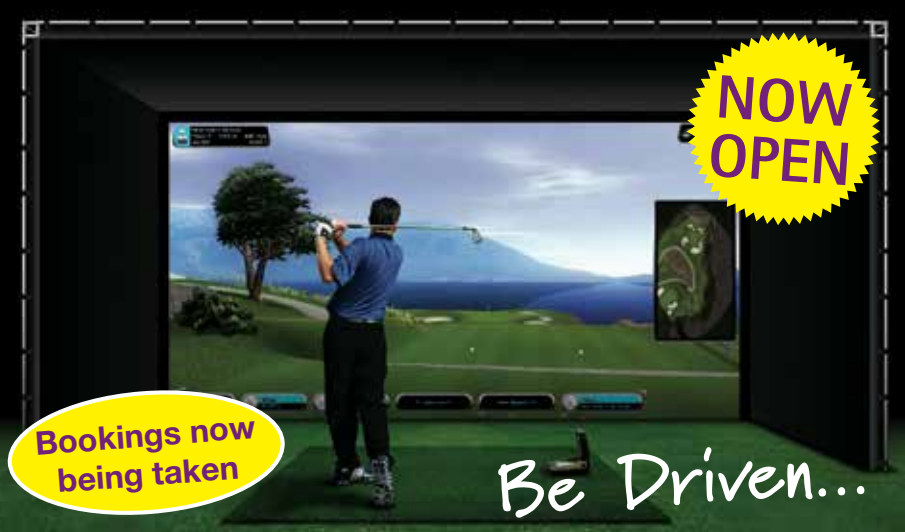
Some off-peak lane closures (9.30am-4pm) will be required on the A322 during the Easter school holiday period, excluding the busy Bank Holiday weekend, to enable the final road surface to be laid and these are expected to last two days in each direction.

There will also be two overnight closures on both the Nine Mile Ride and New Forest Road sides of the junction to enable the final road surface to be laid.

Advance warning signs will flag up the dates affected.

Visit www.bracknell-forest.gov.uk where there is a page set up for the Coral Reef junction improvements for the latest on the project.

INDOOR GOLF SIMULATOR



Now is your chance to play some of the worlds top courses like Celtic Manor, Birkdale or Troon, from as little as £25 an hour.

Downshire Golf Complex
Easthampstead Park, Wokingham RG40 3DH
Tel: 01344 302030 Fax: 01344 301020
Email: downshiregc@bracknell-forest.gov.uk
Web: www.bracknell-forest.gov.uk/downshiregolf
www.facebook.com/downshiregolf



Breakthrough employment support

Adults in the borough with a learning disability or autistic spectrum disorder (ASD) can access support with preparing for, obtaining and maintaining employment after the council relaunched Breakthrough Supported Employment.

Two residents who use Breakthrough, Hannah Escott and David Blackburne, helped to spread the word on the service relaunch by manning an information stand at Time Square and sharing their own employment journeys with the public.

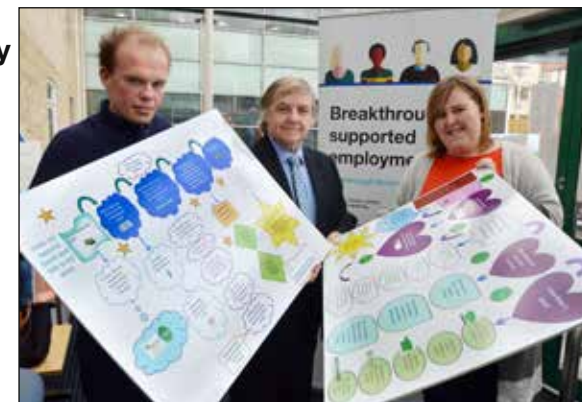
Hannah, 25, said: "I got in touch with Breakthrough just before I left college. My job coach spent time getting to know me and what I wanted to do. They helped me write my CV and cover letter and also helped me prepare for interviews. I've now got five jobs that I love."

Cllr Dale Birch, executive member for adult services, health and housing, said: "Breakthrough offers invaluable support to adults with a learning disability and/or ASD; Hannah and David's stories of what they have achieved with the support of the service are truly inspiring. I hope they will inspire other residents to contact the team for support with their own employment journey."

Alison Koen, development manager in adult social care said: "We help people to achieve their dreams by enabling them to be as involved with the community as they want to be, gain skills and experience, develop friendships and improve their wellbeing."

Adult referrals are made to Breakthrough through the social care team.

To find out more, download the new service literature or read Hannah and David's story, visit www.bracknell-forest.gov.uk/breakthroughsupportedemployment



Take control of your health this year

The council has launched a year-long initiative to encourage residents to take control of their own health and wellbeing and to urge local businesses to do more for their employees by getting involved in the Year of Self Care.

Self care means keeping fit and healthy and seeking help when we need it, whatever our age, ability or state of health. A healthy body and mind gives us the ability to live life to the full with fewer limitations.

The Year of Self Care is an invitation to think about different types of self care each month, it's not just about living for longer, it is about being healthy for longer. Local information and events will be available to help you make positive lifestyle changes. Businesses are encouraged to think more about what they could do to improve the health and wellbeing of the employees that are the backbone of their commercial success.

Cllr Dale Birch, executive member for adult services, health and housing said: "Good health and wellbeing starts with us and when we take care of ourselves we get more enjoyment out of

life. This is why we are encouraging residents and businesses to take part in the Year of Self Care, as a way to stay fit and healthy.

"Sometimes those simple changes can make a big difference."

Throughout this year the council will be dedicating each month to a different area of self care:

- March: Healthy ageing
- April: Physical activity
- May: Eating and drinking
- June: Carer wellbeing
- July: Learning and volunteering
- August: Children and families
- September: Workplace health
- October: Quit smoking
- November: Winter wellbeing
- December: Celebration events



Visit www.bracknell-forest.gov.uk/yosc for more details. You can also contact us at public.health@bracknell-forest.gov.uk or call us on 01344 355219 to request updates in the post.

We're encouraging residents and local businesses to work with us to promote the Year of Self Care. If you have an initiative or event you would like us to promote, do send us the details and join us in promoting a healthier Bracknell Forest.

14,500 LED street lights to save £8m

The council has approved proposals to install energy saving LED lamps in all Bracknell Forest street lights within three years.

The £8.3m 'invest to save' project begins in April to ensure all 14,500 street lights in the borough are LED by 2019.

The current cost of maintaining street lighting in the borough, including electricity costs, is around £1.2m a year. The project is expected to save £8m over 25 years, after all costs have been accounted for, and significantly reduce the council's carbon footprint.

The savings will come from reduced energy consumption, less routine maintenance, fewer breakdowns and no routine bulb replacements. The work is to be carried out by the council's street lighting contractor, Ringway.

Cllr Chris Turrell, executive member for planning and transport, said: "We were replacing our street lighting with LEDs on an annual programmed basis, but this would have taken many years to complete.

"By investing in LED lighting we will reap significant financial benefits for council tax payers in the long term. LEDs are much more energy efficient and last much longer. This means lower energy bills and less maintenance.

"The scheme to replace the lighting will ensure we make the savings more quickly and ensure our council tax payers are getting value for money.

"In addition, all street lights will be brought under a computer controlled central management system which allows for further efficiencies in operations and maintenance."

LEDs provide a clear white light and will illuminate the roads and footpaths more efficiently than the existing systems as the lanterns are designed to focus the light more accurately, which also helps to reduce light pollution.

There is more information on the Bracknell Forest Council website www.bracknell-forest.gov.uk

Tree planting in South Hill Park

Beech, oak, maple and alder trees will be enjoyed for generations to come, thanks to two councillors.

Old Bracknell ward councillors Iain McCracken and Peter Heydon used a portion of their Members' Initiative Fund to have 30 trees planted in the North Lake area of South Hill Park in January.

The councillors joined Kath Moss, grounds manager at the park, and Allan Moffat, recreation facilities manager at Bracknell Town Council, which manages this area of the park, to help plant some of the trees.

Cllr Heydon said: "It is important to keep our open areas looking beautiful and these new additions to South Hill Park will certainly enhance its appeal to residents and visitors alike."

Cllr McCracken said: "It was fantastic to go down to South Hill Park and get hands on by helping to plant the trees ourselves alongside Kath and Allan and all of the dedicated staff at the park."



Don't forget to join the 10,000 residents so far who have set up a self service account to make their contact with the council easier and more convenient.

You can create and access your own personal account via our website - www.bracknell-forest.gov.uk

The account gives users access to forms for a range of queries and once logged, the enquiry or service request can be managed online by logging back in and checking for updates.

Enquiries can be logged for street cleansing, grounds maintenance, highways, the tree service and waste and recycling.

Work is also underway on extending services to include council tax and the registration service.

Cllr Iain McCracken, executive member for culture, corporate services and public protection, said: "This is a very useful service for our residents which helps them to log and keep track of queries at their own pace and in their own time, making certain council services are accessible at any point during the day.

"I would urge people to go online and sign themselves up."

It's easy to set up an online self service account, but if you require assistance please call customer services on 01344 352000 or pop in to the council's Time Square office.

Discover the latest news on events and activities from us and our partner organisations around the borough at facebook.com/whatsonbracknellforest



Myths busted - rethinking recycling

1. FICTION: All of our recycling goes to landfill anyway.

FACT: No way! It costs the council more money to bury waste than to recycle it, especially as councils are faced with an ever increasing landfill tax, so it just would not make economic sense to do that.

2. FICTION: There is no point recycling, it doesn't make a difference.

FACT: Yes it does! As well as saving money, recycling stops tonnes of rubbish being buried in landfill. In the UK, recycling saves about 10-15 million tonnes of carbon emissions a year, which is the equivalent of taking 3.5 million cars off the road.

3. FICTION: It causes huge amounts of pollution trucking all the recyclable materials around the country.

FACT: Our recycling goes down the road to Reading to be processed. It is true that there are relatively few reprocessors for recyclable materials at present and mileage costs and associated pollution have to be taken into account. However, as more uses and markets are developed and more local reprocessing takes place, the market price for recycled materials will rise.

4. FICTION: You can only recycle paper a few times.

FACT: Fibres in paper start to break down after they have been recycled five or six times, but the material can still be used to make egg cartons, packaging, loft insulation, paints and even new road surfaces.

5. FICTION: Recycling metal uses more energy than extracting the raw material in the first place.

FACT: Recycling aluminium cans saves up to 95 per cent of the energy needed to make new cans from fresh raw material. The energy saved in not having to make just one aluminium can from scratch is enough to power a TV for three hours. Every tonne of new aluminium made creates four tonnes of waste, whereas a tonne of recycled aluminium creates no waste.

6. FICTION: Recycled glass is worse quality than other glass.

FACT: Glass can be recycled endlessly without any loss of quality. Go to our website to find your nearest recycling sites that accept glass.

7. FICTION: It's OK to send food waste to landfill because food breaks down naturally.

FACT: Every year in the UK we throw away seven million tonnes of food - the equivalent of 260kg per household per year. An area the size of Wales would be needed to produce all the food and drink currently

wasted; if this amount was sent to landfill, it will produce the harmful greenhouse gas methane. This is because food waste needs oxygen to biodegrade naturally but when it is all squashed into landfill no air can get to it. Food waste makes up 36.3 per cent of the total waste in residents' green bins in Bracknell Forest and almost half of that percentage could be composted at home.

8. FICTION: All plastics are the same and most of them have a recycle logo so they should all be recyclable.

FACT: Currently, Bracknell Forest collects only plastic bottles at kerbside - they are easy to sort and of higher value in a generally depressed market for plastics where prices have fallen.

Margarine tubs, food trays and other plastics which are not bottles are made from a wide range of polymer, most of which is blended. This causes problems with sorting and processing. There are very few processing plants in the UK for mixed plastics and councils that collect mixed plastic often send their materials to China or to an Energy from Waste plant as it has a high calorific value. A significant portion of our residual waste from the green bins is already being sent to an Energy from Waste plant and the mixed plastics contained within it are a valuable material for that process.

So depending on the type of plastic, it might not be worth the money to recycle it. There are however certain sites that will accept a wide range of mixed plastics. Go to our website and click on the recycling locator to find your nearest recycling site.

9. FICTION: I can't recycle anything if the labels are still on.

FACT: You don't need to take the lids or labels off - you can leave them on making it even easier for you to recycle. However, it will be very helpful if the lids are taken off plastic bottles before they go in your blue bin as the lids are made of a different type of plastic that makes them harder to recycle.

10. FICTION: We are already recycling as much as we can.

FACT: EU member states are already legally obliged to recycle 50 per cent of their household waste by 2020, a target most are struggling to meet - including the UK, which recycled 43.5 per cent of waste in 2013. Bracknell Forest Council achieved a household recycling rate of 39.3 per cent in 2014/2015. With EU targets set for councils to climb up to 70 per cent by 2030. We need our residents' help.

What can you recycle?

What you can and can't put in your blue bin:

Yes please:

- Plastic bottles including drinks bottles, detergent bottles, shampoo type bottles.
- Food tins
- Drinks cans
- Empty aerosol cans
- Paper and card including newspapers, magazines, Yellow Pages, telephone directories, wrapping paper, junk mail and envelopes

No thanks:

- Carrier bags
- Yogurt pots
- Margarine tubs
- Ice cream tubs
- Food trays
- Plastic film and wrapping
- Cartons
- General waste including food waste, garden waste, nappies
- Glass bottles and jars - take these to a local recycling site
- Clothes and shoes - take these to a local recycling site

Residents who recycle their household waste can also earn reward points when they join the Recycling Incentive Scheme.

Reward points can be redeemed towards activities at South Hill Park, Downshire Golf Complex, The Look Out Discovery Centre and Bracknell Forest Council's libraries.

Surplus points can also be donated towards a good cause or charity.

For more information on the scheme, the rewards available and how to sign up go to www.bracknell-forest.gov.uk/bluebin or call customer services on 01344 352000

For more information about recycling and food waste, go to www.recyclenow.com or www.lovefoodhatewaste.com

Children and council help spruce up community garden

The springtime fruits of the autumn labour of schoolchildren, Bracknell Forest Council staff and the council's grounds maintenance staff are set to bloom.

As part of its annual community initiatives, Continental Landscapes Ltd (CLL), Bracknell Forest Council's contractor, worked in partnership with the council's environmental services team and Crowthorne Parish Council to revive the Millennium Garden in Crowthorne High Street in the autumn.

The project has seen the replacement of two overgrown lime trees with two crimson sentry trees. This work opened up space for the area to be cleared and ready for colourful new shrubs and bulbs which were planted by pupils from Crowthorne C of E School, pictured right.

Councillor Mrs Dorothy Hayes, executive member for the environment, said: "CLL has

done a great job in bringing the garden back to its former glory.

"With spring on its way, the garden will look fresh and ready to be enjoyed by the whole community."

The garden was created in 1999 in partnership with Crowthorne Parish Council to celebrate the turn of the century.

The renovation work also included inscriptions on the memorial stone being repainted, the ground mosaic being jet-washed, cleaning work on benches and the lamp column, and replacing an old bin.

The "Welcome to Crowthorne" sign has also since been updated with current logos.



Celebration awards evening for our fantastic foster carers

More than fifty Bracknell Forest foster carers who have collectively looked after hundreds of the borough's most vulnerable children have been honoured for their dedication.

The foster carers, who together provide long-term, short-term, respite and special care for children aged up to 18 years old, were recognised for their love, support and dedication at the Foster Carers' Celebration Evening in February.

The council organises the event every two years to thank all its foster carers for their hard work, which provides the borough's looked after children with the love and support they need to thrive.

Special presentations were made to more than eighteen foster carers celebrating specific milestones or achievements in their foster caring career, including Alison and Alan George who have been fostering since 1985 and retired in September, looking after scores of children in that time over periods of time ranging from weekends to 12 years.

Mrs George said: "It is so rewarding to see those children change and grow after you provide them with a safe, loving, normal family environment – that gives you a real glow and is the nicest thing about fostering."

Cllr Tony Virgo, deputy mayor of Bracknell Forest, presented the

certificates while Cllr Gareth Barnard, executive member for children, young people and learning, thanked foster carers for all their hard work during his speech.

It is estimated that 9,000 additional foster families need to be found in 2016 in the UK; Bracknell Forest needs to recruit at least 10 families so that local children can continue to be looked after locally. There is a particular shortage of families who are able to provide care for teenagers within Bracknell Forest.

Cllr Barnard said: "Our foster carers are a fantastic group of people whose dedication, compassion and understanding ensure that our foster children are given the right support and care to succeed.

"We are very lucky to have such a wonderful pool of foster carers in Bracknell Forest to rely on. However, we desperately need more people to come forward and take on this rewarding role in 2016 so we can continue to provide the best support to our looked after children and young people locally.

"If you've ever thought about



becoming a foster carer, to provide either long-term or short-term care, then we want to hear from you. By signing up you could change a young person's life, as well as your own."

To find out more about becoming a foster carer call the council's family placement team on 01344 352020, visit www.bracknell-forest.gov.uk/fostering or drop-in to the next information session on 23 March between 7pm and 9pm at Brownlow Hall, Warfield.

Rebranding

Residents will see some changes this year when their bins are collected – but not with the unaffected service itself.

Bracknell Forest Council's contractor SITA UK is being rebranded under the SUEZ name which is being rolled out across the Bracknell Forest contract in 2016.

Crews should have already received their new uniforms and their lorries will be rebranded through spring and summer.

The brand is the only change made – the service remains the same and people collecting your bins and managing the contract are the same.

To mark the changeover, representatives from SUEZ's headquarters in France visited Bracknell Forest Council's Commercial Centre in January to see for themselves some of the new lorries being prepared ahead of their roll-out.

Thanks for having your say

Thanks to everyone who took the time to share their views on *Town & Country*, Bracknell Forest Council's newspaper for residents.

The annual survey, which appeared in the winter edition, asked readers what they thought of *Town & Country* and whether it kept them informed about Bracknell Forest Council's services, among other questions.

The 2015 survey results show *Town & Country* remains a popular source of council news and information among the residents who responded to the survey. The newspaper tops the list as the preferred source of council information by a significant 70 per cent of those residents who responded.

Overall, more than 92 per cent of readers feel they are informed about the council and its services and nearly 90 per cent of respondents said *Town & Country* helps them understand what the council does.

More than 90 per cent of residents who took part in the survey rated *Town & Country* as excellent or good and the same number of people said they liked the look of the newspaper.

Among the many comments we received from respondents were: 'useful and informative and helps to bring the community together'; 'Keep doing a good job'; 'I enjoy reading about what's going on in the area and think it's well presented and easy to read'; 'Very informative. Having not lived in the borough long, I already feel more in touch with local affairs than previous council'.

Cllr Iain McCracken, executive member for culture, corporate services and public protection, said: "As ever we're grateful that our residents spare the time to give us feedback about *Town & Country*. Each year they tell us how much they value it as a source of council news and information and how much they like it."

The three winners of the *Town & Country* prize draw, who each received a £50 store voucher from us to say thanks for taking part in the readers' survey were Jay Dixon, Rebecca Findlay and Roger Cooper.

Could you be there for me?



Foster carers needed for young people aged 10 to 18

Teenage years can be difficult for all of us and some of us might remember feeling insecure and misunderstood. But for a young person who has gone through particularly distressing experiences at home, it can be a very unsettling time.

This is a critical stage in their lives but with the right guidance, support and being placed with the right family, will blossom, developing the skills for a happy, successful, independent adulthood.

To find out more about the full support, training and the generous allowance we provide you, please contact us on

01344 352020

email: fostering@bracknell-forest.gov.uk

www.bracknell-forest.gov.uk



Good reads for book clubs

A librarian has helped shape the influential list of reads which will feature in one of the country's most respected book clubs.

Simon Hart, pictured right, library supervisor for Birch Hill and Great Hollands Libraries, was part of a team of librarians from across the country tasked with selecting the latest batch of reads for the BBC Radio 2 Book Club.

Simon, 40, took up the opportunity offered by The Reading Agency charity – which works with libraries to develop lists for community book clubs but also helps to compile the Radio 2 list – along with 51 other librarians.

Over the festive period, Simon and his fellow volunteers were each tasked with reading seven books from a longlist and then ranking their favourites from one to seven.

With each librarian ranking their favourites, this produced a list of 29 books and in January, Simon and his fellow volunteers met up to debate and discuss their final list of 12.

Radio 2 staff will take the final number down to six and the books chosen will feature in the Radio 2 Book Club in the spring and summer.

Simon said: "The email came through to get involved and I thought I couldn't turn it down as it would be something quite exciting and different."

Simon has been in his current role for nine years and has worked for Bracknell Forest Council for 15 years.

Councillor Iain McCracken, executive member for culture, corporate services and public protection, said: "It is great to see our experienced, knowledgeable library staff like



Simon being sought after by such an institution as the Radio 2 Book Club.

"I am sure it was a fantastic experience to go through and I am absolutely delighted for him.

"It shows the respect in which our library staff are held in their field."

In the last six months of 2015, 1,797 activities have been run at Bracknell Forest libraries with 28,934 people attending.

For more about the council's libraries and the services offered, go to www.bracknell-forest.gov.uk/libraries

Streets of gold

Grounds maintenance and street cleaning in Bracknell Forest has swept up with an industry gold-standard grade.

Continental Landscapes Ltd (CLL), Bracknell Forest Council's contractor, has progressed through the FORS (Fleet Operator Recognition Scheme) to reach gold standard.

FORS members get greater access to shared knowledge about fleet maintenance and enhanced training courses for staff members and the business as a whole.

For Bracknell Forest residents, this all adds up to:

- fewer accidents and drivers trained to have greater awareness of cyclists and motorcyclists
- reduced emissions in the borough through the latest engine technology and fewer vehicles on the road through fleet management techniques
- a greater service the company now provides

Billy Vance, CLL's training and safety co-ordinator, said: "FORS complemented our existing systems, and helped us build on them. We knew that we were already making sound decisions with the way we manage our fleet, and FORS confirmed that we were doing the right things, but allowed us to build on those successes."

Councillor Mrs Dorothy Hayes, executive member for the environment, said: "It is great to see our contractors going the extra mile by enhancing its operations which ultimately provides more value for money for our residents."

Bracknell Forest Libraries

...more than just books, come in and see

Use it
Love it
Join it

Ascot Heath SL5 8LA	01344 884030
Binfield RG42 4JZ	01344 306663
Birch Hill RG12 7WW	01344 456526
Bracknell RG12 1BH	01344 423149
Crowthorne RG45 7AT	01344 776431
Great Hollands RG12 8UX	01344 424095
Harmans Water RG12 9LP	01344 423660
Sandhurst GU47 9BL	01252 870161
Whitegrove RG42 3JP	01344 424211

Activities/
events for
children and
adults

Reminiscence
and coffee
mornings

Family
history
resources

FREE
internet
access

Bounce &
rhyme and
storytime

Reading
and book
groups

Newspapers
and
magazines

Crafts and
hobbies

Audio
books

www.bracknell-forest.gov.uk/libraries



Learn new skills with OCL

Spring is just around the corner so why not take advantage of the longer days and the promise of warmer weather to try out a community learning course?

This spring, we have a wide range of exciting courses on offer from cookery to flower arranging, first aid training to drawing. A wide range of computing courses are on offer too.

Courses will include:

Shellac nails	Saturday, 19 March, 1pm-3pm	£15
Photo editing	Saturday, 19 March, 1pm-3.30pm	£15
Flower arranging: make a table decoration for Easter	Tuesday, 22 March, 7pm-9pm	£25
Keep your PC running smoothly	Wednesday, 23 March, 7pm-9pm	£10
Using the Cloud	Tuesday, 12 April, 7pm-9.30pm	£15
Microsoft Word	Tuesday, 12 April, 10am-12.30pm	£8
Beginners computing	Wednesday, 13 & 20 April, 9.30am-1.30pm	£25
Flowers in oil pastels	Fridays, 15 April - 6 May, 10am-noon	£48
Drawing animals	Fridays, 15 April - 20 May, 10am-noon	£60
Calligraphy illumination	Saturdays, 16 - 30 April, 1.30pm-4.30pm	£60
Pet first aid certificate *fee includes certificate	Saturday, 23 April, 1pm-4.15pm	£31
Microsoft Excel	Tuesday, 26 April, 10am-12.30pm	£8

For further information about any of our courses, please call 01344 354220 or view the full range of courses at www.bracknell-forest.gov.uk/communitylearning where you will also be able to make a booking.

MARCH

Every Wednesday, 10am - 12 noon. South Hill Park Gardening Group. Join our small, friendly group who help to keep the grounds of South Hill Park looking beautiful. Tea/coffee provided. Please bring gardening gloves if you have them. Meet at rear terrace at South Hill Park, RG12 7PA.

Every Thursday, 10am - 12 noon. Cultivating Friends at Lily Hill Park. Get stuck in with the Lily Hill Park gardening team. Tea/coffee provided. Please bring gardening gloves. Meet at North car park, off Lily Hill Road, Bracknell, RG12 2RX.

Every Friday, 8pm. The Comedy Cellar at South Hill Park www.thecomedycellar.co.uk

Until 2 May. The Slime Show at The Look Out is on at weekends and during Bracknell Forest school holidays. Visit www.bracknell-forest.gov.uk/thelookoutdiscoverycentre

Until 3 April. Photographic exhibition at South Hill Park. Free admission.

Tuesday 8 – Saturday 12. 7.30pm, 2.30pm

Saturday matinee. Crowthorne Musical Players stage Calamity Jane at South Hill Park. Book tickets at www.southhillpark.org.uk

Wednesday 9, 10.30am. Ranger led walk of around two miles. Meet at 10.30am at Savernake car park, off Savernake Way, Bracknell, RG12 0UX.

Friday 11, 8pm. Simon Allen plays the saxophone at South Hill Park www.southhillpark.org.uk

Saturday 12, 7.30pm. Artree Live Music at South Hill Park www.artree.org.uk the popular Festival of Folk.

Sunday 13, 3pm. London Military Band at South Hill Park www.southhillpark.org.uk

Monday 14, 7.30pm. MISSION IMPROVable at South Hill Park. Mad Monkey Improv are back with their hit show. www.southhillpark.org.uk

Wednesday 16 – Sat 19, 7.45pm. At Your Services at South Hill Park. www.southhillpark.org.uk

Sunday 27, 3pm. The Black Feathers + support at South Hill Park. www.southhillpark.org.uk

Tuesday 29, 12 noon - 3pm. Easter Treasure Hunt at Jennett's Park. Costs £2. Book on 01344 354441 and meet in the car park off Swift fields, Bracknell, RG12 8DY.

Wednesday 30, 10am – 11.30am. Discover the birds at South Hill Park with local ornithology expert Brian Clews. Costs £2. Book on 01344 416235 and meet in the courtyard in front of reception.

Thursday 31, 10am - 11am. Community litter pick at South Hill Park (Take Pride in Bracknell Forest) Meet in the courtyard in front of reception.

Thursday 31, 1pm - 3pm. Easter Treasure Hunt at Lily Hill Park. Costs £2. Book on 01344 354441 meet at the giant picnic bench. Parking available off Lily Hill Road, Bracknell, RG12 2RX.

APRIL

Every Wednesday, 10am - 12 noon. South Hill Park Gardening Group. See March.

Every Thursday, 10am - 12 noon. Cultivating Friends at Lily Hill Park. See March.

Every Friday, 8pm. The Comedy Cellar at South Hill Park. See March.

Until 2 May. The Slime Show at The Look Out. See March. www.bracknell-forest.gov.uk/thelookoutdiscoverycentre

Saturday 2, 9am - 12.30pm. Date with Nature Walk at Dinton Pastures Country Park. Meet at the main car park, RG10 0TH. Cost £1 per adult, children free. Visit www.rspb.org.uk

Sunday 3, 3pm. All Things Considered + support at South Hill Park. An afternoon music club www.southhillpark.org.uk

Wednesday 6, 10am – 12 noon. WildOnes wild craft drop-in at Jennett's Park. Best for fives and over. Costs £2 for materials. Meet at Jennett's Park Community Centre, Tawny Owl Square, Bracknell, RG12 8EB.

Wednesday 6 - Sunday 10, 2pm and 7pm. Oliver! at South Hill Park. www.southhillpark.org.uk

Thursday 7, 1pm – 2.30pm. WildOnes go mini-beasting at South Hill Park. Meet in the courtyard in front of reception.

Thursday 7 – Saturday 9, 8pm. The Lamellar Project at South Hill Park. www.southhillpark.org.uk

Friday 8, 10am - 12 noon. WildOnes craft drop-in at Sandhurst Memorial Park. Costs £2 for materials. Meet at Sandhurst Community Hall, Yorktown Rd, Sandhurst, GU47 9BJ.

Friday 8, 8pm. Lee Goodall plays saxophone and flute at South Hill Park. Featuring younger players at 7.30pm www.southhillpark.org.uk

Saturday 9 April, 7.30pm. Artree Live Music at South Hill Park www.artree.org.uk See March.

Sunday 10, 4.30pm. West Forest Sinfonia Chamber Concert at South Hill Park www.southhillpark.org.uk

Sunday 10, 7.30pm. MISSION IMPROVable at South Hill Park www.southhillpark.org.uk

Wednesday 13, 10.30am. Ranger led walk, a leisurely meadow meander of up to two miles. Meet at Pope's Meadow car park, St Marks Rd, Binfield, RG42 4AY.

Wednesday 13 and Thursday 14. Toddler Days at The Look Out Discovery Centre with On The Farm art and craft theme www.bracknellforest.gov.uk/thelookoutdiscoverycentre

Saturday 16, 3pm - 4pm. Capturing nature photography at Lily Hill Park. Book on 01344 354441. Meet at North car park, off Lily Hill Road, Bracknell, RG12 2RX.

Saturday 16, 7.30pm. Youth & Community Galas at South Hill Park www.southhillpark.org.uk

Sunday 17, 2pm and 4pm. The Cat in the Hat at South Hill Park. For young children aged over three www.southhillpark.org.uk

Tuesday 19, 10.30am. Ranger led walk at Binfield and Billingbear up to four miles. Meet at Jack O'Newbury car park, Terrace Rd North, Binfield, RG42 5HX. Map ref: 845 719.

Tuesday 19, 7.30pm. 2Faced Dance Company, Dreaming In Code at South Hill Park www.southhillpark.org.uk

Wednesday 20 – Saturday 23, 7.45pm. Studio Theatre Company, Four Nights in Knaresborough at South Hill Park. www.southhillpark.org.uk

Thursday 21, 7.30pm.

Kathryn Tickell and The Side at South Hill Park. www.southhillpark.org.uk

Saturday 23, 10am

- 12 noon. Discover the Countryside at Jennett's Park. Meet at car park off Swift Fields, Bracknell, RG12 8DY.

Tuesday 26, 10 - 11am.

Community litter pick at South Hill Park (Take Pride in Bracknell Forest). Meet in the courtyard in reception.

Tuesday 26 and Wednesday 27 April, 7.30pm.

Invincible at South Hill Park. www.southhillpark.org.uk

Wednesday 27, 8pm. The Echo at South Hill Park www.southhillpark.org.uk

Thursday 28, 7.30pm. Shakespeare Untold Romeo and Juliet and Titus at South Hill Park. www.southhillpark.org.uk

Friday 29, 7.30pm. Stones in his Pockets at South Hill Park. www.southhillpark.org.uk

MAY

Every Wednesday, 10am - 12 noon. South Hill Park Gardening Group. See March.

Every Thursday, 10am - 12 noon. Cultivating Friends at Lily Hill Park. See March.

Every Friday, 8pm. The Comedy Cellar at South Hill Park. See March.

Saturday 7, 9am - 12.30pm. Date with Nature Walk at Dinton Pastures Country Park. See April for details.

14 May until 4 September. The Look Out Discovery Centre puts on the Superhero Science www.bracknell-forest.gov.uk/thelookoutdiscoverycentre

JUNE

Every Wednesday, 10am - 12 noon. South Hill Park Gardening Group. See March.

Every Thursday, 10am - 12 noon. Cultivating Friends at Lily Hill Park. See March.

Every Friday, 8pm. The Comedy Cellar at South Hill Park. See March.

Saturday 4, 9am - 12.30pm. Date with Nature Walk at Dinton Pastures Country Park. See April for details.

JULY

Every Wednesday, 10am - 12 noon. South Hill Park Gardening Group. See March.

Every Thursday, 10am - 12 noon. Cultivating Friends at Lily Hill Park. See March.

Every Friday, 8pm. The Comedy Cellar at South Hill Park. See March.

Saturday 2 July, 9am - 12.30pm. Date with Nature Walk at Dinton Pastures Country Park. See April for details.



Thursday 17, 8pm. Navi King of Pop at South Hill Park. Michael Jackson tribute show www.southhillpark.org.uk

Friday 18, 7.30pm. Conservatoire Concert Series at South Hill Park. www.southhillpark.org.uk

Saturday 19, 7.30pm. Youth & Community Galas at South Hill Park. www.southhillpark.org.uk

Sunday 20, 7pm. Berkshire Dance Artist of the Year Competition www.southhillpark.org.uk

Tuesday 22, 10.30am. Ranger led walk around Caesar's and Redoubts, up to seven miles. Meet at The Look Out car park, Nine Mile Ride, RG12 7QW. Map ref: 878 661. Please note car parking charges apply.

Wednesday 23 – Thursday 24, 2pm and 7.30pm. Eagle House School presents Thirteen the Musical at South Hill Park www.southhillpark.org.uk

Thursday 24, 8pm. Country/Americana Night featuring Paul Carella at South Hill Park www.southhillpark.org.uk

Saturday 26, 2pm. Aesop's Fables at South Hill Park. Storyteller Derek Florey spins wonderfully imaginative tales. www.southhillpark.org.uk



SUPPORT

Age Concern Bracknell Forest: office
01344 428074, day centre 01344 422048 -
www.ageconcernbracknell.org.uk

Alzheimers Society, Bracknell area: Geraldine Durrant - 07713390714 - geraldine.durrant@alzheimers.org.uk - www.alzheimers.org.uk

Berkshire Asbestos Support Group: 0800 884 0720 -
www.berkshireasbestosupport.org

Bracknell and District Citizens Advice Bureau: 0844 499 4107 - www.bracknellcab.org.uk

Bracknell Area Deaf and Hard-of-Hearing Support Group: 01189 783541 (loop system available) - info@badhogs.org

Bracknell Tuesday Stroke Club: Meryl Lay - 01344 429098

Bracknell Thursday Stroke Club: 01344 442717 -
01344 422504

Bracknell Mencap: Alison - 01344 868076 - alison@bracknellmencap.org - admin@bracknellmencap.org

Bracknell Parkinson's UK: Will Hague -
01276 850286 - wghague@waitrose.com -
www.bracknellparkinsons.org

Bracknell Wick Hill Women's Institute: Sally Barrett - 01344 454582 - peterandsallyb@talktalk.net

Crowthorne Stroke & Disabled Club: 01344 775725

East Berks Ostomy Club: Jackie Dudley - 01344 426652 - jackie.dudley@sky.com

Easthampstead Rotary Club: John Fordham -
01344 862440 - john.fordham@BTconnect.com -
www.easthampsteadrotary.co.uk

Konnections@The Kerith.co.uk - Sandy Carter - 01344 828802

New Hope (substance or alcohol misuse):
call 01344 312360

Owlsmoor Senior Citizen Association: Jenny Honeyset - 01276 33790

Rethink Mental Illness, Bracknell Community Support Services: Alison Summersbey -
01189 892653 - Alison.summersbey@rethink.org -
www.rethink.org

Samaritans of Bracknell, Wokingham, Ascot & Districts: 01344 455556 (emotional support) 01344 868808 (admin, publicity & recruitment)

Sandhurst Stroke & Disabled Club: Pam Owles -
01344 775698 - owles_family@hotmail.com

The Active Weigh Healthy Eating and Fitness Classes: Miss Ali Cannon - 07542170427 - ali@theactiveweigh.co.uk - www.theactiveweigh.co.uk

Three Counties Breast Cancer Support Group: Jackie Wetherall - 01344 774149 - jackie@btinternet.com

Women's Institute, Owlsmoor: Hazel Hawkes - 01344 780453.

MUSICAL GROUPS

Binfield Singers: Jan Vigar - 01344 411267 -
01344 411681 - michaeljhawkins@googlemail.com

Boys' Voices: 01344 775367 - www.boysvoices.uk

Bracknell Choral Society: Fiona Hardman -
07922662740 - fionahardman@gmail.com -
www.bracknellchoral.org.uk

Crowthorne Choral Society: Teresa Edwards - secretary@crowthornechoral.org.uk - www.crowthornechoral.org.uk

Crowthorne Musical Players: Simon Light -
01344 411278 - 07906366009 - s.light@which.net -
cmptickets@gmail.com - www.cmp-berks.org.uk

Crowthorne Symphony Orchestra: 0118 972 2164 - www.crowthorneorchestra.com

Crowthorne Village Singers: Susan-Mary Spiller -
01344 780604.

Park Opera: Tony Bentley - 01344 429352

Sandhurst & District Corps of Drums:
Mark Saunders - 07751 754981 -
mark@sandhurstdrums.co.uk -
www.sandhurstdrums.co.uk

Thames Voyces Chamber Choir: 01344 771966

Thursday Singers: Penny -
williamspacethefuture@aol.com

The Savoy Singers: Pam Stevens - 07710 772792 - secretary@savoysingers.org.uk - www.savoysingers.org.uk

ART GROUPS

The Ark Trust Ltd: 01344 266899 - www.theark.org.uk

Great Hollands Art Group: Eileen Mann - 01344 451041

CONSERVATION/OUTDOOR ACTIVITIES

Ascot Horticultural Society: Peter Cleare -
01344 622086 - www.ascothorticulturalsociety.org

Binfield Badger Group: 0709 2234377 - www.binfieldbadgers.org.uk

Bracknell and District Friends of the Earth:
01344 449115

Bracknell Conservation Volunteers: Trevor Scott - 01344 628602 - eddiescott999@yahoo.co.uk - www.bracknellcv.org.uk

Berkshire Woodturning Association:
Richard Maynard - 07901556175 - richardmaynard@trees2timber.com - www.berkshirewoodturners.org.uk

Duke of Edinburgh's Award: Kevin Rangers - 01344 354441

Royal County of Berkshire Churches Trust:
Jill Shepherd - 01276 36187

RSPB Wokingham and Bracknell Local Group: www.rspb.org.uk/groups/wokinghamandbracknell

Warfield Environment Group: Claire - 01344 302798 -
warfieldenvironmentgroup@hotmail.com -
www.warfield-env-group.co.uk

LEISURE

Ascot Locomotive Society: E Chambers - 01344 883425

Ascot Yoga / Ascot Zumba: Flo Young - 07711077038 -
flo@ascotyoga.co.uk
flo@ascotzumba.co.uk - www.ascotyoga.co.uk
www.ascotzumba.co.uk

Bacchus Over 35 Singles Social Club: www.bacchus-singles.co.uk

BARA - Bracknell Active Retired Association:
Mrs Jacqui Brown - 01344 447424
jacqui.brown1972@ntlworld.com

Bracknell Active Retired Association: Beryl Duncombe - 01344 427932

Bracknell Afternoon Townswomen's Guild: Rosemary Harris - 01344 303804 -
rosemaryh3@talktalk.net

Bracknell and Binfield Ladies Darts League: Mrs Sylvia Robinson - 01344 484893 - bbladiesdarts@sky.co.uk

Bracknell and District Historical Society:
01344 625700

Bracknell & District Wargames Club: G Bazett - 07979 593437 - gamesclub_secretary@yahoo.co.uk - www.bracknellwargames.co.uk

Bracknell Film Society: David J Maxwell -
01344 483964 - maxwell359@btinternet.com -
www.bracknellfilmsoc.org

Bracknell Forest U3A (University of the Third Age): Tony Bolt - 01344 483843 - membershipsecretary@bracknellu3a.org.uk - www.bracknellu3a.org.uk

Bracknell & Wokingham College: 0845 330 3343 -
www.bracknell.ac.uk

Bracknell & Wokingham District Cats Protection: Lynne Potheary - 0845 371 4212 - readingeastcp@hotmail.com - www.cats.org.uk/bracknell

Bracknell Branch of the National Women's Register:
01344 860039 - www.nwr.org

Bracknell Camera Club: enquiries@bracknell-camera-club.co.uk

Bracknell Chess Club: Ian Searle - 01344 482281 -
www.berkshirechess.co.uk

Bracknell Circle Dance: Anne Parry - 01344 424655

Bracknell Flower Club: Alison Phillips - 01344 882733

Bracknell LETS (Local Exchange Trading System): Gill - 01344 442914 - j.hudson9@ntlworld.com - bracknell-lets.co.uk

Bracknell Open Learning Centre: Natalie Gendall -
01344 457427 - olc@bracknell-forest.gov.uk -
www.bracknell-forest.gov.uk

Bracknell Reel Club - Scottish country dancing: 01189 793024 - www.bracknellreelclub.org.uk

Carnation Sequence Dance Club: Peter Cairneross -
01344 893552

Club Marmalade (inclusive nightclub run by people with disabilities): 01344 755528 - www.clubmarmalade.org.uk

Tap and Jazz/Lyrical Dance Classes for Adults:
Elaine - 01344 484736 - dancenow9@aol.com

Glee Club UK: Melissa - 07967 768320 - info@gleeclubuk.com - www.gleeclubuk.com

Harmans Water Women's Institute: Lesley Barton -
01344 427486 - Margaret Latham - 01344 443244

Over 50s Tea Dance Club: Shirley Braban - 01344 441110

Owlsmoor Community Centre Dance Classes:
Miss Timms - 01276 65049

Pilates Beginners at Ascot & Windsor: Amanda - 07927 543214 - Pilatesofexcellence@yahoo.co.uk - www.facebook.com/pilatesofexcellence.co.uk

Pilates in Owlsmoor: Tina - 07540 187807

Sandhurst Camera Club: Bob Hallsworth - 07780 681700 - chair@sandhurstcamera.club

Sandhurst & Crowthorne Flower Club:
Wendy Gostling - 01344 780797 -
gostling@btinternet.com

Sandhurst Ladies Golden Circle Club: Linda Bothwell - 01252 870214 - maidok64@hotmail.com

Sandhurst Women's Institute: Liz King -
01344 777131 - lizcraftylady@googlemail.com

Saturday Morning Short Walks: Brian Poulton - 07443499207 - 01344 483940 - bp2007@poultry-towers.co.uk - www.sebr.co.uk

South East Berks Ramblers: Brian Poulton -
07443 499207 - bp2007@poultry.towers.co.uk -
www.serb.org.uk

Zumba Fitness (Zumbafit4all): Wahida Finlay - 07702 604227 - zumbafit4all@hotmail.co.uk

YOUTH GROUPS

All Starz Kids Club: David Ritchie - 01344 886900 -
David.Ritchie@warfield.org.uk -
www.warfield.org.uk

Bracknell Young Gamers Club: Jean Remillard - 01344 648500 - www.byggclub.co.uk - jean.remillard.uk@gmail.com

Konnections @ The Kerith (youth groups):
01344 862699

Kumon (after school maths): 01344 776504

South Berks District Scouts (Birch Hill, Hanworth, Wildridings, Great Hollands, Crowthorne, Sandhurst and Owlsmoor): www.southberksscouts.org

South East Berkshire District Scouts (Ascot, Binfield, Bullbrook, Crown Wood, Harmanswater, Priestwood, Sunningdale and Warfield): Steve Richards - 01344 860039 - steve.richards@seberksscouts.org - www.seberksscouts.org

ZoneYouth Club, Warfield: David Ritchie - 01344 886900 - David.Ritchie@warfield.org.uk - www.warfield.org.uk

SPORT

Active 4 Life / A Balanced Body with Lee Bowen: running, personal training, Bowen Therapy: Lee Avery - 07710 722615 - www.active4lifewithlee.co.uk - Bowen Therapy - www.abalancedbodywithbowen.co.uk

Back to Netball: Niki Kelly - 07905 725974 - niki@initialsports.co.uk - www.initialsports.co.uk

BATS (Ball and Team Sports) - Bert Ridley - 01344 423264 - patandbert@btinternet.com

Bracknell Bowling Social Club: 01344 423494

Bracknell Combat Academy martial arts classes (children and adults): Ian - 01344 311131 - www.combatacademy.co.uk

Bracknell Town over 50s walking football club: John Waterton - 01344 303688

Great Hollands Bowls Club: David Harnden - 01344 423365 - Iris Sullivan - 01344 424371

Moves Fitness Classes: Rosie Martiiu - 07780 801970 - rosie@movesfitness.com - www.movesfitness.com

Rugbytots: 0845 3133255 - www.rugbytots.co.uk

Sandhurst Health Walks: Kat Bradshaw - 01252 876593 - 07789 226264 - sandhursthealthwalks1@yahoo.com - sandhursthealthwalks.weebly.com

Sandhurst Indoor Short Mat Bowls Club: Ann Glaister - 01276 34774 - Ann.Glaister@ntlworld.com

Sandhurst Joggers: Ian Watson - 01252 873055 - chair@sandhurstjoggers.org.uk - www.sandhurstjoggers.org.uk

Short Mat Bowls Club: Penny - 01344 882137 - Jackie - 01344 301158 - peter.nicky@tinyworld.co.uk

SSKA Shotokan Karate for GCSE /A Level - Fitness & Self Defence: Sensei Phil Trivett - 07859 013104 - karateshotokan1@outlook.com - www.sska.co.uk

Washindo College-Karate-do The Peaceful Way: Karen Stone - 07970 868920 - karenstone65@icloud.com - www.wshindocollege.co.uk

Tae Kwon Do, Owlsmoor: Mr Douglas - 0845 310 5783

TNT Academy Krav Maga Self Defence for Youths: Tamas - 07955 920942 - www.tntacademy.net

Wellington College Badminton Club: Ranbir Heyre - 07977 464394 - rheyre@hotmail.com

Winkfield Tennis Club: 01344 885110

Yateley Offshore Sailing Club: Ian Skinner - 01276 31241 - membership@yosc.org - www.yosc.org.uk

PARENTING SUPPORT GROUPS

Binfield Coffee Drop at Binfield Library: Sarah Henty - 01344 306663

Bracknell National Childbirth Trust (NCT): Rebecca - 0844 243 6058 - bracknellNCTenquires@hotmail.co.uk - www.nct.org/branches/bracknell

Crowthorne & Sandhurst National Childbirth Trust: Linda - 0870 4211871

Friday Mums Group Konnections@TheKerith: call 01344 862699

Home-Start Bracknell Forest: Val Callan or Tracey Lyndon - 01344 860025 - admin@homestartbf.plus.com - www.homestart-bracknell-forest.org.uk

Itchy Feet Toddler Gym Class & Little Bakers Cooking Club: Elizabeth Claridge-Ware - 01344 890668 - theoldschoolascot@gmail.com - www.facebook.com/little-bakers-and-itchy-feet-at-the-old-school-nursery

Jo Jingles Ascot and Bracknell: Jackie Thornton - 01344 484473 - jo.jingles@btopenworld.com - www.jojingles.com/ascot

Music with Mummy: Clare Klesel - 01344 451988 - www.musicwithmummybracknell.co.uk
Music with Mummy - Owlsmoor: Michelle - 01344 778582

One + Lone Parent Support Group: Sarah Hardy - 01344 862699 - sarah.hardy@kerith.co.uk - www.kerith.co.uk

Sing and Sign - Owlsmoor: Michelle Elmer - 01252 838984

The Alders Children's Centre: Amanda Hales-Owen - 01344 354208 - www.bracknell-forest.gov.uk/childrenscentres

The Oaks Children's Centre: Sandra Woodward - 01344 317020 - www.bracknell-forest.gov.uk/childrenscentres

The Rowans Children's Centre: Louise Clark - 01344 312800 - www.bracknell-forest.gov.uk/childrenscentres

The Willows Children's Centre: Sandra Woodward - 01344 354450 - www.bracknell-forest.gov.uk/childrenscentres

If you have a club or organisation you would like to promote or want to change an existing listing write to:

Town & Country Communications and Marketing Chief Executive's Office Bracknell Forest Council Easthampstead House Town Square Bracknell RG12 1AQ



Name of group/organisation
.....
.....
.....

Contact name
.....
.....

Contact tel
.....

Email
.....

Website
.....



Bracknell Forest Council does not necessarily endorse any of the organisations included on this page.

Bracknell Forest Council meetings



March

- Tue 8 5.00pm Executive
- Wed 9 5.00pm Corporate Parenting Advisory Panel
- Thu 10 7.30pm Overview and Scrutiny Commission
- Mon 14 5.30pm Bracknell Town Centre Regeneration Committee
- Tue 15 5.00pm School & Children's Centre Performance Advisory Panel
- Tue 15 7.30pm Adult Social Care and Housing Overview and Scrutiny Panel
- Wed 16 7.30pm Employment Committee
- Mon 21 9.00am Appeals Committee (part open)
- Wed 23 7.30pm Environment, Culture and Communities Overview and Scrutiny Panel
- Thu 24 7.30pm Planning Committee
- Wed 30 7.30pm Governance and Audit Committee

April

- Tue 12 5.00pm Executive
- Wed 13 7.30pm Children, Young People and Learning Overview and Scrutiny Panel
- Thu 14 7.30pm Health Overview and Scrutiny Panel
- Thu 21 7.30pm Planning Committee
- Wed 27 7.30pm Council

May

- Mon 9 5.30pm Bracknell Town Centre Regeneration Committee
- Tue 10 5.00pm Executive
- Thu 12 7.30pm Overview and Scrutiny Commission
- Wed 18 7.30pm Annual Meeting of the Council
- Thu 26 7.30pm Planning Committee

June

- Mon 6 9.00am Appeals Committee (part open)
- Wed 8 7.30pm Children, Young People and Learning Overview and Scrutiny Panel
- Thu 9 5.00pm School and Children's Centre Performance Advisory Panel
- Thu 9 7.30pm Licensing and Safety Committee
- Mon 13 6.30pm Education Governor Nominations Committee (part open)
- Tue 14 5.00pm Executive
- Tue 14 7.30pm Adult Social Care and Housing Overview and Scrutiny Panel
- Mon 20 6.00pm Standards Committee
- Wed 22 5.00pm Corporate Parenting Advisory Panel
- Thu 23 7.30pm Planning Committee
- Wed 29 7.30pm Governance and Audit Committee
- Thu 30 7.30pm Health Overview and Scrutiny Panel

All meetings will be held at Easthampstead House unless otherwise stated. Details correct at time of going to press.

Spring into shape with a Platinum membership



PLATINUM MEMBERSHIP INCLUDES



Free Gym Starter Kit*
for all new Platinum memberships
- offer extended whilst stocks last!

Bracknell Leisure Centre

Bagshot Road, Bracknell, Berkshire, RG12 9SE Tel: 01344 454203

Email: blc.enquiries@bracknell-forest.gov.uk Web: www.bracknell-forest.gov.uk/be

* subject to availability and T&C apply.



**Do you own a property or properties in
Bracknell Forest which you want to rent out?
Are you a private sector landlord
or would you like to be one?**



**We're looking for two and three bedroom homes which we could
rent out on your behalf to families on our housing waiting list.**

The property must:

- be clean and in a good condition
- be safe from hazards
- have a carbon monoxide detector & smoke alarm/detector
- have a landlord's gas safety certificate
- have an NICEIC electrical certificate
- have an energy performance certificate

In return you will get:

- market rent rates
- guaranteed rental income
- free tenancy management
- no advertising costs
- reference checks
- no loss of rent due to void periods
- properties leased for 12 months or longer
- management of repairs

**For more details about this scheme,
please email Janet Weekes**

Private.Sector-Leasing@bracknell-forest.gov.uk
or call 01344 351586
or write to: Janet Weekes
Bracknell Forest Council
Time Square, Market Street
Bracknell RG12 1JD

